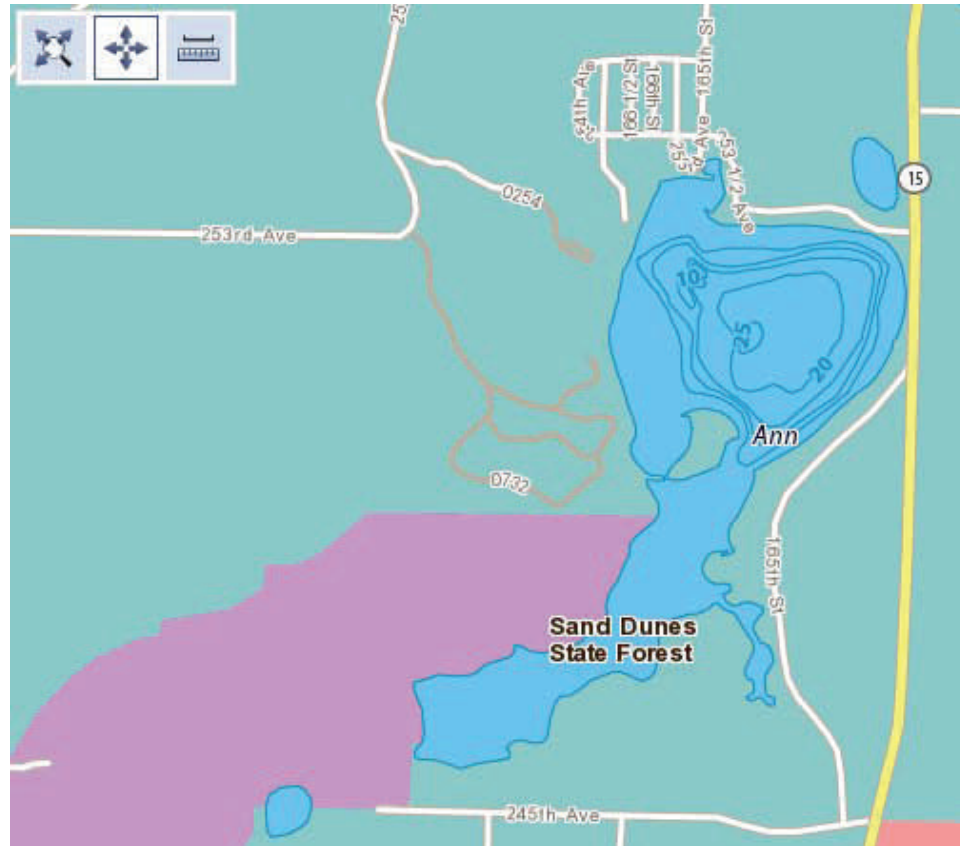




Rose Hart, Realtor
612-250-0119
952-885-6329
rhart@cbburnet.com
www.rosehartrealtor.com
CBBurnet Realty
7550 France Ave. South, Edina, MN



Ann Lake, Big Lake, Sherburne County, 184 acres. Sand and silt bottom. Heavy vegetation.
Maximum depth: 26 ft.
Water Clarity: 11.50 ft.
Aquatic Invasive species:

MN DNR Fishing Report: <http://www.dnr.state.mn.us/lakefind/showreport.html?downum=71006900> NOTE: History of winter kills, and limited success with winter aeration.

Sherburne County Zoning Ordinance: <http://www.co.sherburne.mn.us/zoning/pz/zoningord.php>

Abuts Sand Dunes State Forest, check for watercraft speed and landing restrictions.