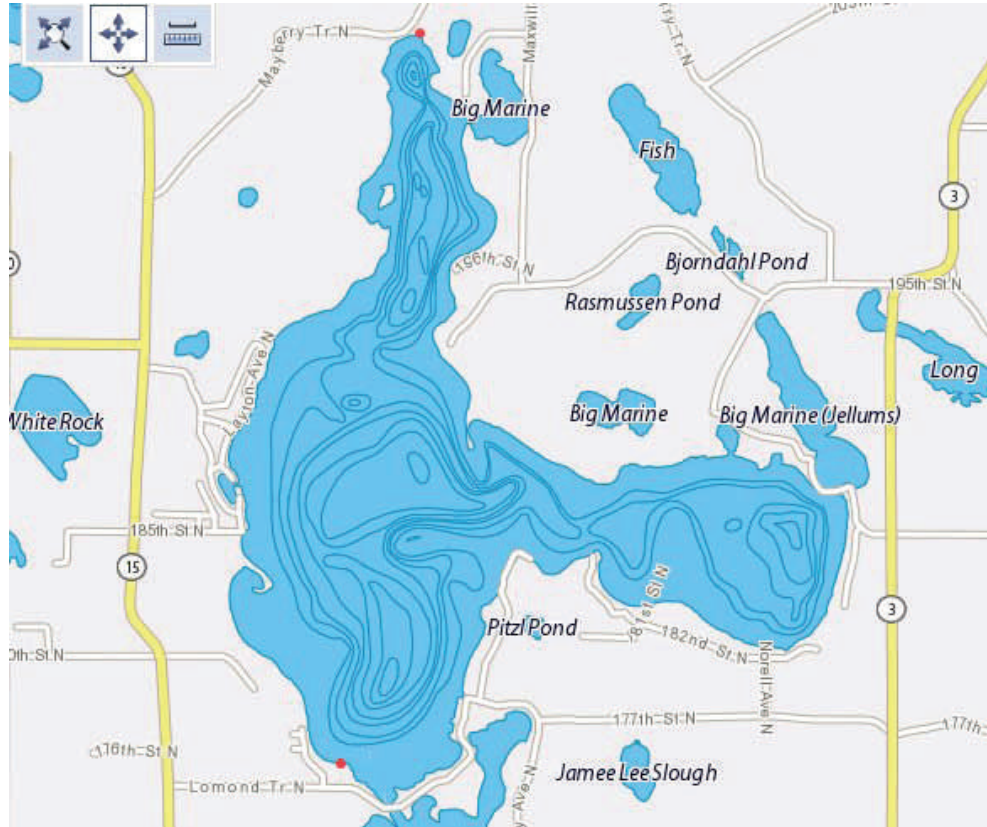




Rose Hart, Realtor
612-250-0119
952-885-6329
rhart@cbburnet.com
www.rosehartrealtor.com
CBBurnet Realty
7550 France Ave. South, Edina, MN



Big Marine Lake, Forest Lake, Washington County, 1799.18 acres. Sandy bottom.
Maximum depth: 60 ft.
Water Clarity: 8.5 ft.
Aquatic Invasive Species: Eurasian milfoil.

The DNR Fish Report: <http://www.dnr.state.mn.us/lakefind/showreport.html?downum=82005200>

Washington County Groundwater and Surface Water Management; Land and Water Legacy Program (LWLP):
http://www.co.washington.mn.us/info_for_residents/environment/water_resources/groundsurface_water_management/

Carnelian Marine St. Croix Watershed District, Scandia Twp.: <http://www.cmscwd.org/>

DNR inventory number 82005200. A large portion of Big Marine's shore has been targeted by Washington County for High Priority Conservation. Washington County may impose Conservation Easements on new parcel owners, check potential changes in shore restoration and stormwater runoff. This includes items from driveways to culverts. Potential buyers of lakeshore foreclosures, property in Sheriff Sale, estate sale, or other financial hardship may be competing with the County for "Opportunity Purchase". The entire county's bedrock is shallow and well water should be tested.